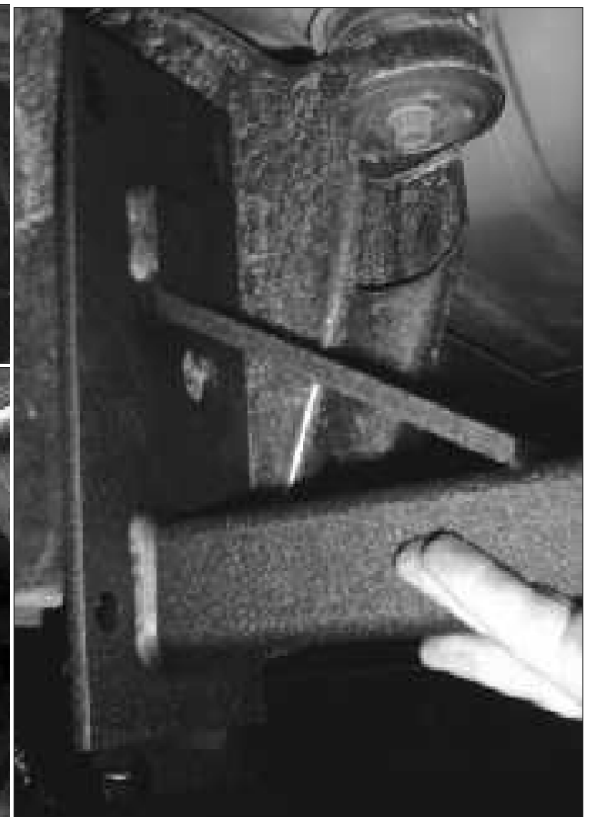


# 10743

Make and Model	Year	Mount Style
Dodge Ram 2500/3500 Long Box	2012	Front Split Frame



**Tools required** 3/4" Wrench, 3/4" Socket, Ratchet or Impact Gun, 5/8" wrench

## INSTRUCTIONS:

- 1) Locate tiedown placement (near the front of box). **FIG 1A**
- 2) Place U-bolts around frame. (Note: On driver side the gas tank may need to be loosened in order to get the U-bolts up over the top of frame)
- 3) Place tie-down on U-bolts and secure with 1/2" nuts. **Fig 1B** (Note: On driver side use outside hole on tie-down, on passenger side use the inside hole on tie-down to clear muffler bracket)
- 4) Tighten up all bolts so that it is secure to the frame. (Torque U-bolts to 65f/lb.)
- 5) Repeat steps for other side.

**NOTE:** THE GAS TANK MAY NEED TO BE LOOSENED ON THE DRIVER'S SIDE IN ORDER TO GET THE U-BOLTS UP OVER THE FRAME. MOVE THE GAS TANK BACK ONCE THE U BOLTS HAVE BEEN PLACED OVER TOP OF THE FRAME

**Note:** Check and re-tighten all nuts and bolts after initial use.

**WARNING: CAMPER NOT TO EXCEED CAPACITY OF VEHICLE**